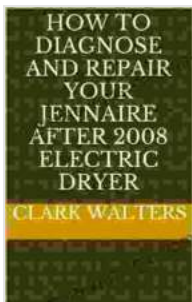


Master the Art of Repairing Your Jennaire Electric Dryer (Post-2008): A Comprehensive Guide

As a homeowner, facing appliance malfunctions can be a daunting experience. If your Jennaire electric dryer manufactured after 2008 has given you trouble, fear not! This in-depth guide will empower you with the knowledge and step-by-step instructions to diagnose and repair your dryer efficiently.

Understanding Your Jennaire Dryer

Jennaire dryers are renowned for their advanced features and durability. However, like any machine, they can encounter issues. Understanding the components and functions of your dryer is crucial for effective troubleshooting.



How to diagnose and repair your Jennaire after 2008 electric dryer by Kyle Wilson

★★★★★ 5 out of 5

Language : English
File size : 4831 KB
Text-to-Speech : Enabled
Screen Reader : Supported
Enhanced typesetting : Enabled
Print length : 67 pages
Lending : Enabled



Key Components:

- Drum: Where clothes tumble during the drying cycle
- Heating element: Generates heat to evaporate moisture
- Motor: Powers the drum's rotation
- Exhaust system: Removes hot, humid air from the dryer
- Control panel: Allows for cycle selection and settings

Functions:

- Drying: Removes moisture from clothes using warm air
- Sensing: Monitors moisture levels and adjusts the drying cycle accordingly
- Exhausting: Vents hot air outside to prevent overheating

Common Problems and Diagnostics

Identifying the specific issue with your dryer is the first step towards a successful repair. Here are some common problems and their diagnostic tips:

Problem: Dryer not heating

- **Diagnostic:** Check if the heating element is glowing. If not, it may need to be replaced.
- **Diagnostic:** Inspect the thermal fuse. If it is blown, you will need to replace it.

Problem: Dryer not tumbling

- **Diagnostic:** Ensure the drum is not overloaded. Excess weight can strain the motor.
- **Diagnostic:** Check the drive belt. If it is loose or broken, replace it.
- **Diagnostic:** Inspect the motor. A humming sound without rotation may indicate a motor failure.

Problem: Dryer not exhausting air

- **Diagnostic:** Clean the lint trap and exhaust vent hose. Clogs can restrict airflow.
- **Diagnostic:** Check the blower wheel. If it is damaged or blocked, it may need to be replaced.

Step-by-Step Repair Instructions

With the problem identified, you can proceed with the repair. The following instructions provide a detailed walkthrough for each component:

Replacing the Heating Element

1. Unplug the dryer and remove the back panel.
2. Locate the heating element and disconnect the wires.
3. Unscrew the element and remove it from the housing.
4. Install the new heating element and tighten the screws.
5. Reconnect the wires and secure the back panel.

Replacing the Drive Belt

1. Unplug the dryer and remove the front panel.
2. Locate the drive belt and loosen the tensioner pulley.
3. Remove the old belt and install the new belt around the pulleys.
4. Tighten the tensioner pulley to secure the belt.
5. Reinstall the front panel.

Replacing the Blower Wheel

1. Unplug the dryer and remove the back panel.
2. Disconnect the wires from the blower wheel.
3. Remove the bolts holding the blower wheel in place.
4. Pull out the old blower wheel and insert the new one.
5. Secure the blower wheel with bolts and reconnect the wires.

Preventive Maintenance Tips

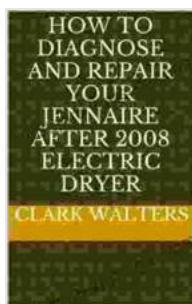
Regular maintenance can help prevent future repairs and extend the lifespan of your dryer. Here are some tips:

- Clean the lint trap after every use.
- Inspect and clean the exhaust vent hose periodically.
- Avoid overloading the dryer.
- Use the appropriate dryer settings for different fabrics.
- Schedule professional maintenance checks as recommended by the manufacturer.

Replacement Parts and Troubleshooting Assistance

If you encounter any difficulties during the repair process, consult the owner's manual or seek professional assistance. Genuine replacement parts can be Free Downloaded from authorized Jennaire dealers or online retailers.

Repairing a Jennaire electric dryer manufactured after 2008 can be a rewarding task with the right knowledge and tools. By following the diagnostic and repair instructions outlined in this guide, you can restore your dryer to optimal performance. Remember, regular maintenance is key to ensuring longevity and trouble-free operation. If you require further assistance, do not hesitate to contact a qualified appliance technician.



How to diagnose and repair your Jennaire after 2008 electric dryer by Kyle Wilson

★★★★★ 5 out of 5

Language : English
File size : 4831 KB
Text-to-Speech : Enabled
Screen Reader : Supported
Enhanced typesetting : Enabled
Print length : 67 pages
Lending : Enabled





Pearl Harbor: The Day That Changed World History

On December 7, 1941, Japan launched a surprise attack on the United States naval base at Pearl Harbor in Honolulu, Hawaii. The attack resulted in...



Unveiling the Secrets of Abundance Distribution and Energetics in Ecology and Evolution

The ****Theory of Abundance Distribution and Energetics**** is a groundbreaking framework that revolutionizes our understanding of...